

# Avaya CajunView™

## Enterprise Network Management System

As enterprise networks become more sophisticated and include increasingly disparate elements, keeping the network operating smoothly becomes more challenging. Meeting this challenge of managing campus LANs, WANs, and voice networks requires a management tool that provides a single access point to all applications and a view of the entire network.

### Enterprise Management

Avaya Enterprise Management is a unified collection of elements that eases the task of network management and provides core services such as discovery and event correlation. These services provide the basis for Cajun Campus Management along with WAN Services and voice management for the converged environment.

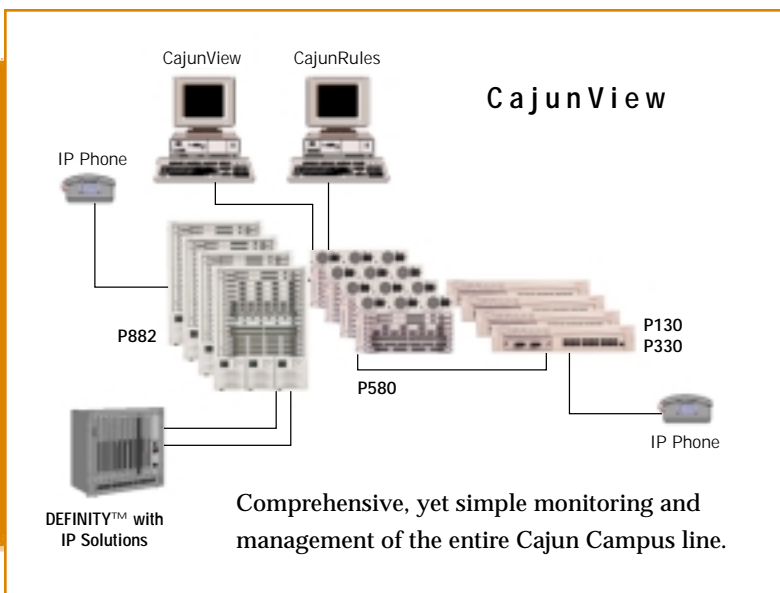
This approach optimizes performance and management of the enterprise using applications such as switch monitoring, software update,

and VLAN management. More importantly, it creates policy-enabled networks that are capable of adopting to various enterprise needs.

One of the major elements of Avaya Enterprise Management is the CajunView Suite, which includes a number of solutions for optimizing network performance.

### Highlights

- Complete management and monitoring of the entire Cajun™ Campus line
- AnyLayer™ SMON
- ConfigMaster including EZ2Rule
- UpdateMaster
- VLANMaster
- LANEMaster
- AddressMaster
- Device Managers
- Web-based management
- Independent Platform Services
- Access from anywhere





## CajunView

The CajunView Suite is a comprehensive collection of SNMP-based applications that simplifies the complex task of enterprise switched network management. It allows you to configure, monitor, and control the Avaya Cajun Campus family of products using a single, integrated suite of applications. This includes everything from wizard-style device configuration to advanced value-added applications that differentiate the Avaya Campus offering from competitors' offerings, such as the industry-leading Switch Monitoring (SMON) for enterprise as well as Quality of Service (QoS) management and monitoring.

CajunView can be used either in conjunction with the HP OpenView™ Network Node Manager or in standalone mode, thus enabling chassis views launched from the platforms and providing the user with hierarchical views displaying device groups, network status together with Alarm views and Event log views.

The CajunView Suite provides standards-based management across a variety of operating systems for the following campus devices from a single management station:

- Avaya P120
- Avaya P330 stackable switching system
- Avaya P550 family
- Avaya M770 (Ethernet and ATM)
- Avaya P880 family

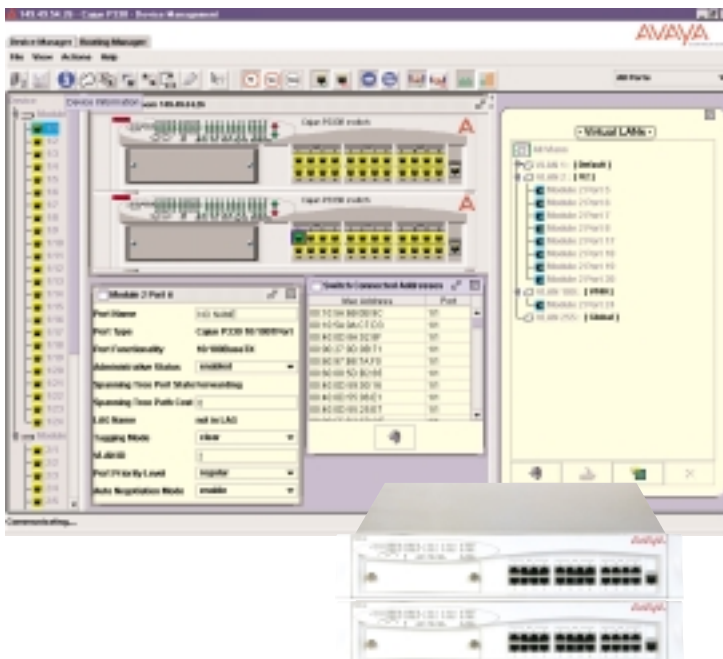
CajunView provides management for SMON (Switch Monitoring), network-wide ATM Services, Virtual Local Area Networks (VLANs), QoS and Access Control Lists, and Emulated Local Area Networks (ELAN) to VLAN mapping.

The ConfigMaster application ensures accurate and easy configurations from port to switch level. In addition, the UpdateMaster application enables you to download new device software releases once they become available.

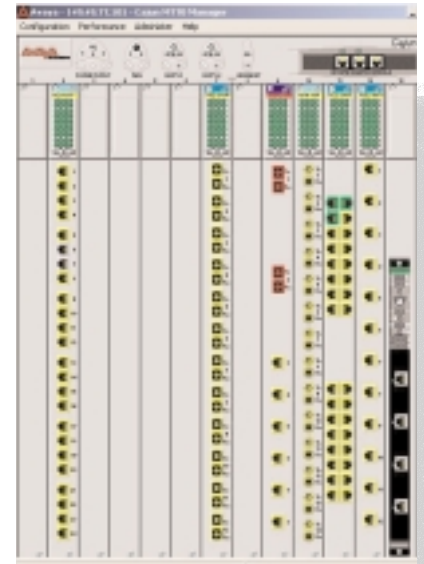
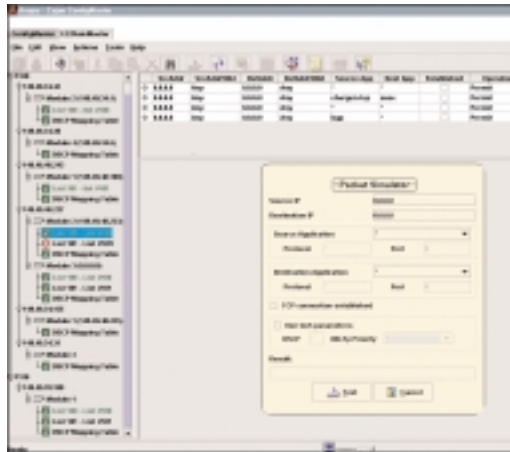
To maximize ease of use, CajunView includes Web-based interfaces for monitoring and configuring devices. This gives you the flexibility to manage the network from any remote site across the Internet. The network manager can use any Internet browser to remotely manage, configure, and view statistics for managed devices.

## Device Managers

Most enterprise networks are in some stage of shared to switched migration. Therefore, they contain a variety of different switches, Layer 3 switches and other devices. What you need is a management system that allows you to easily configure and control all of these devices from a central location.



CajunView device management is a comprehensive application that simplifies set up and configuration, as well as fault diagnosis and management for all Avaya Cajun Campus products. CajunView can operate as an independent platform or be integrated with leading network management platforms, such as HP OpenView™ for Solaris™ or HPOV for Windows® NT®/2000.



CajunView goes beyond platform functionality to give network managers an in-depth look at network behavior, delivering all the tools required for end-to-end device management. With the click of a mouse, you can set up and configure all device parameters, including standard port settings, port security, redundancy modes, and device-specific functions.

CajunView displays an accurate, real-time view of each device at Layers 2, 3 and higher, enabling you to assess port and switch status at a glance. Intuitive color coding depicts LED states, individual port status, cable types, and uplink options. Network managers can also track and display the revision levels of all installed hardware and software. This helps simplify ongoing maintenance through scheduled downloads of new software.

## ConfigMaster

This application saves you time and prevents inconsistent configuration of network devices. ConfigMaster enables quick network setup and installation, as well as fast recovery for faulty devices. It allows downloading and uploading of full configuration data from Cajun Campus devices, thus eliminating configuration errors.

Configurations can be uploaded from existing modules or devices and stored for later recall. These configurations can be applied to a new

device or used to completely reconfigure an existing device. In addition, Configuration files can be exported to other sources such as Word or Excel for reporting and analysis.

ConfigMaster also enables back up of configuration files, either automatically or upon user request. In addition, you may use it to trace any configuration changes.

ConfigMaster includes EZ2Rule—a new campus-wide application that answers the need for QoS management. EZ2Rule eases configuration of QoS parameters as well as Access Control Lists for devices. It enables multiple devices to be configured with policy parameters simultaneously, ensuring accurate and consistent deployment of priorities in the network.

EZ2Rule is perfect for small sites with limited bandwidth resources, such as schools, hotels and multi-tenant environments, which still need to prioritize their network traffic.

For the WAN environment, Avaya Enterprise Management includes CajunRules™ Policy Manager which is fully integrated with CajunView. CajunRules is capable of assuring QoS in converged voice and data environments across multi-vendor equipment.

Whatever the size of your Cajun Campus network, Avaya CajunView helps keep you in control.

CajunView is specifically designed to have the most intuitive graphical interface, making it a very easy to learn and use tool. This state-of-the-art design enables you to apply complicated switch configuration and implement QoS policies with the use of only a few mouse clicks.

With our Web-based campus-wide applications and device managers, you can easily monitor and configure your network from everywhere, including your laptop, using a familiar web-browser interface.



Without an extensive financial or educational investment, administrators can use EZ2Rule as a simple tool for answering their QoS needs; simple in terms of installation, operation and similarity to known and familiar applications adopting well known protocols such as SNMP.

## UpdateMaster

One of the many challenges facing network managers is ensuring that all the devices are running the most current version of the device (agent) software. With enterprise networks containing hundreds of devices, you need a tool that ensures that device software is updated as easily as possible.

UpdateMaster makes updating device software point and click easy. It downloads software to managed Cajun devices and performs all necessary software maintenance operations.

UpdateMaster can also check the software versions currently in use against the latest versions available from the Avaya Web site and recommend updates when a newer version is available. It will send

notification and create a report identifying all Cajun devices not running the latest software version.

UpdateMaster may also be used as an inventory tool for Cajun devices listing Cajun devices residing in the network including their IP, name and software version. This inventory list provides an easy way to view all network devices and get a full network picture at once.

## Web-Based Management

Today, network management is done usually from a central management station that is located in a control center.

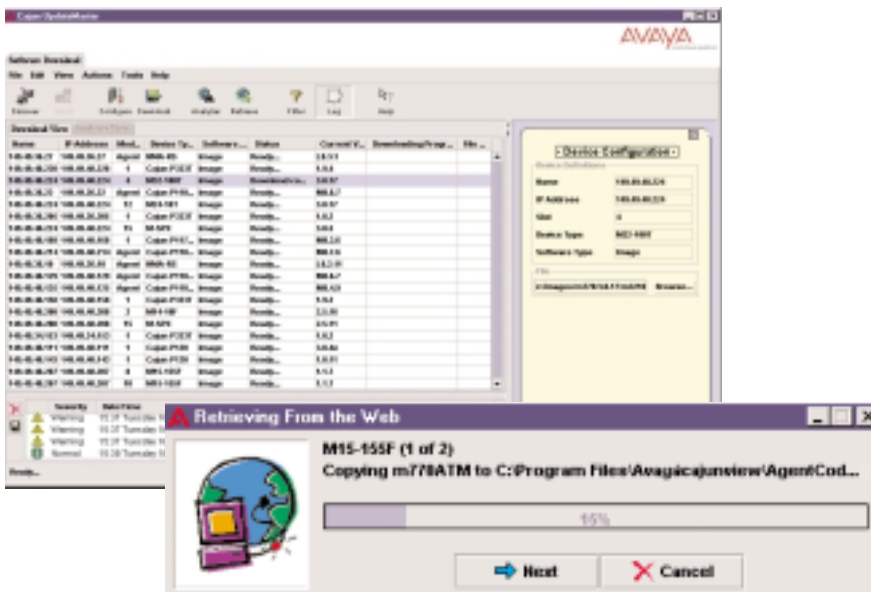
Frequently there is a need to access the management data from a number of locations in the network. Web-based management enables the user to access network management data from any station on the network by simply using a Web browser.

Web-based management can be very useful for technicians that work anywhere on the network and need access to the management station or device.

It may help managers to gather network statistics via their PCs. It gives network managers the flexibility and freedom to manage the network without being tied to the central management station.

In addition, Cajun Campus switches take the approach of embedding a Web server in the network device.

This solution provides a very simple way to access and configure devices. Thus, Web-based management may offer a very low-cost management solution for small and remote sites. In situations where “heavy-duty” management capabilities are not required and you wouldn’t like to make a large investment in network management software, Web-based management may be the perfect tool for you.



## VLANMaster

CajunView Suite includes powerful, easy-to-use tools that help simplify all areas of VLAN management. From initial assignment to moves and changes, CajunView will automatically maintain an up-to-date view.

CajunView provides a very easy-to-use graphical application for VLAN management that allows a network manager to configure and monitor VLAN usage, as well as maintain and assign VLAN numbering and naming across all campus VLANs. Moreover, it enables a network manager to follow additions and changes in the network.

In addition, the application validates VLAN name and tag values and number of VLANs in order to improve VLAN maintenance tasks.

## LANEMaster

In addition to the VLAN management application, CajunView provides you with LANEMaster, a dedicated application for controlling and monitoring ATM networks. This application is a campus-wide tool that facilitates the management of LAN emulation services by automatic configuration for LANE services, drag and drop of LANE services, and logical and physical views of the entire ATM network.

This application also manages devices in mixed ATM/Ethernet environments. The ELAN to VLAN association application enables the definition of associations between Ethernet VLANs and ATM ELANS (Emulated LANs). This ensures consistent mapping throughout the enterprise by identifying ATM edge devices, synchronizing their tables, and reporting progress and problems.



## AddressMaster

When maintaining the network, you need to rapidly locate an IP address or a host in the network. The AddressMaster application answers this need and more. It automatically displays a centralized list of the hosts discovered in the network, and correlates between IP address, MAC address, and device port connectivity. With AddressMaster you can also generate pre-defined reports and automatically discover duplicate IP addresses or port policy violations.

## SMON Switched Network Monitoring

Switches are typically found at the heart of an enterprise network, providing a fast and efficient interchange between LAN segments or between clients and their servers. The increased use of switching, particularly in the network backbone, highlights the need for a new approach to traffic monitoring.

Due to the point-to-point transmission scheme employed by switches, network managers lose critical visibility into the network, precisely where they need it most. Ordinary shared and per-port RMON tools provide only a partial view of overall traffic levels, typically one segment at a time.

Avaya developed the first SMON application and has been shipping this capability for more than 5 years resulting in a proven installed base worldwide.

As SMON proved its value, Avaya worked very hard to make it a standard. Early in 1999, our efforts were rewarded with the acceptance of SMON as a standard by the IETF (RFC 2613).

Since then, Avaya has extended the SMON standard one step further to deliver enterprise switch and port statistics, Layer 3 statistics and QoS statistics which span both Layer 2 and Layer 3.



Avaya CajunView Plus with its standards-based SMONMaster application gives network managers complete visibility of all switched traffic in the network. Using embedded agents, SMONMaster monitors the Ethernet and ATM switching fabric, providing a top-down view of all traffic traversing the entire network of switches.

#### SMON Architectural Advantages

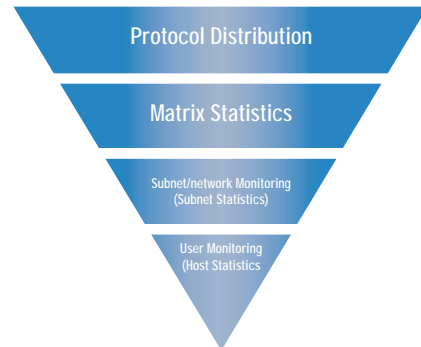
Avaya LAN switches are designed such that all traffic travels across a high-speed switching fabric. It is from this central point that the SMON agent collects statistics about activity in the switch. Since the SMON implementation is based on hardware counters and plays no role in the switch processing, there is no trade-off between switch monitoring and switching performance.

Using SMONMaster, network managers gain important insight into the inner workings of the network, without compromising network performance. This powerful tool monitors Frame as well as Cell traffic and provides detailed information on broadcasts, errors, port and enterprise switch usage, Quality of Service (traffic by class) and conversation monitoring.

SMON monitoring functions are fully integrated with the switching fabric hardware, so packets are counted and recorded at wire-speed. Even at peak loads, SMONMaster provides precise statistics of all traffic in the switched network.

Without real switch monitoring, you can see only very limited portions of the traffic in the switch—so you're effectively operating in the dark. Avaya believes that businesses cannot afford to manage the most critical part of the network—the backbone—as a “black box” where the traffic is hidden from view and out of control.

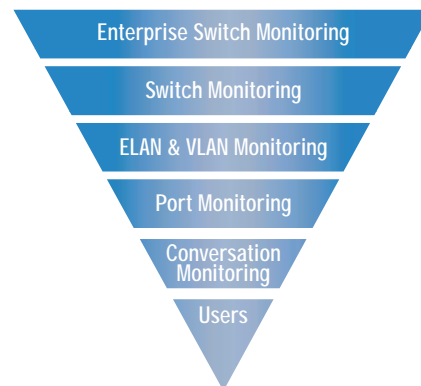
#### AnyLayer SMON Capabilities



In addition to the SMON application that provides Layer 2 level of statistics, Avaya with its 3rd Layer switch architecture and AnyLayer SMON application, provides statistics for Layer 3 and above.

SMONMaster applications provide network statistics such as traffic between different subnets, hosts statistics, IP and IPX traffic in the network and protocol distribution.

#### Top-Down Monitoring



SMONMaster is the only switch monitoring tool that works the way you do: top-down.

Top-down monitoring begins with the Enterprise SMON view, which displays performance statistics for multiple switches simultaneously.

This global overview makes it easy to identify problem areas. From here, you can drill down to monitor individual switches and rapidly identify the “top talkers” (HostTopN) and “who is talking to whom” (Host Matrix).



### Ordering Information—CajunView for Windows® NT®/2000

Product	PEC Code	COM Code
CajunView for Windows NT/2000	4709-250	700175888
CajunView for Windows NT/2000 with OV—250 devices	4709-251	700175896
CajunView for Windows NT/2000 with OV—unlimited devices	4709-252	700175904
CajunView Plus for Windows NT/2000	4709-253	700175912
CajunView Plus for Windows NT/2000 with OV—250 devices	4709-254	700175920
CajunView Plus for Windows NT/2000 with OV—unlimited devices	4709-255	700175938

### Ordering Information—CajunView for Solaris

CajunView for Solaris	4709-004	108364340
CajunView for Solaris with OV—250 devices	4709-700	108445164
CajunView for Solaris with OV—unlimited devices	4709-701	108445180
CajunView Plus for Solaris	4709-005	108364365
CajunView Plus for Solaris with OV—250 devices	4709-702	108445198
CajunView Plus for Solaris with OV—unlimited devices	4709-001	108363478